

# Schools Division

---

## Board Presentation

September 10, 2025



# Central Office Staff



- Dr. Charles Ned, Sr. Director of Schools
- Dr. Margaret Patton, Director of Curriculum & Special Services
- Denise Alamos, Administrative Assistant
- Courtney Atkinson, Instructional Coach

- Shauntee Johnson, Instructional Coach
- JoAnn Galindo, Office Clerk
- Catalina Ramos, Parent Engagement Liaison
- Michelle Rayson, Compliance Officer

#SEETHEIMPACT



# Campus Principals



Mercedes Love



Jatata Hutton

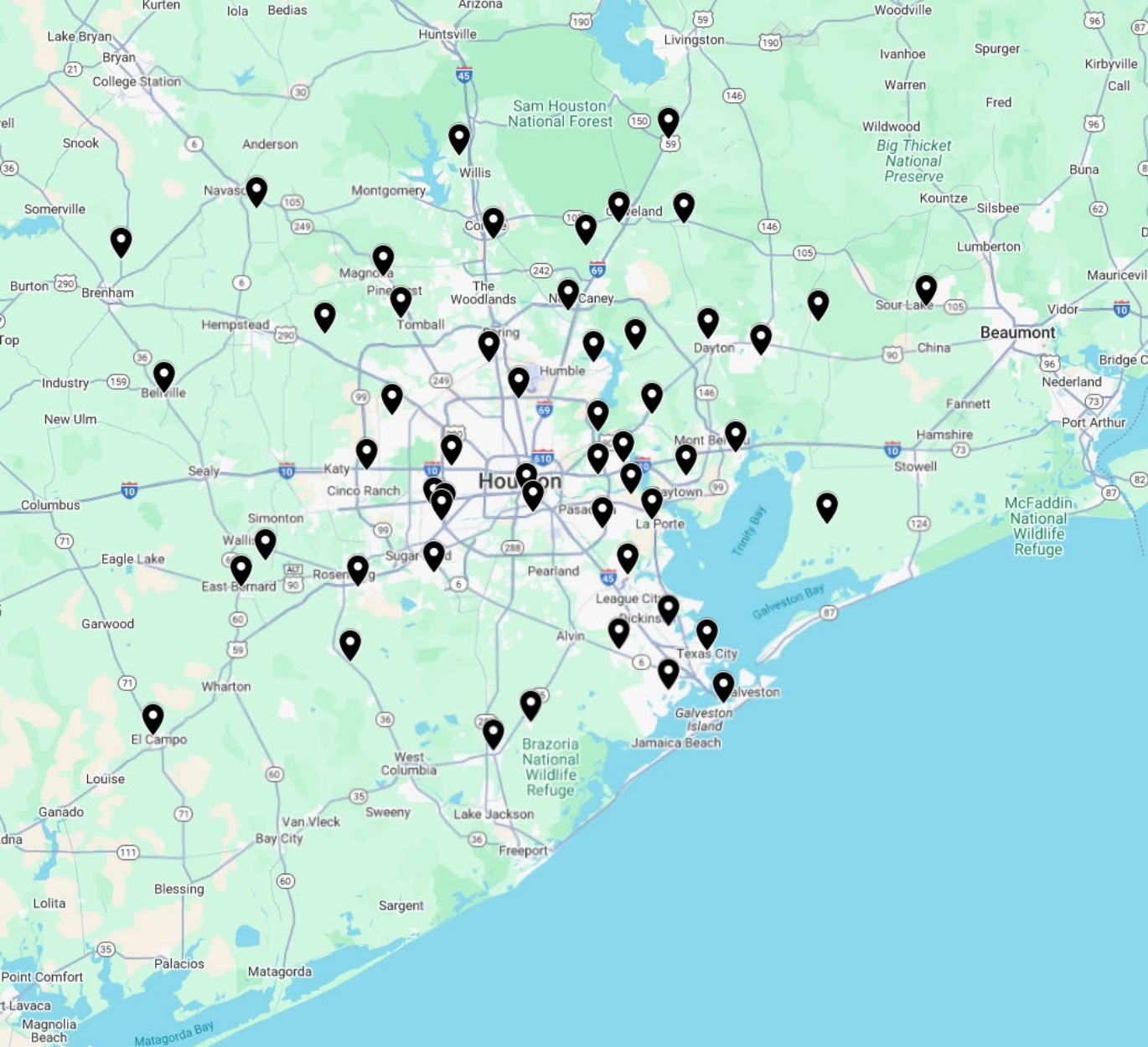


Travita Godfrey



Courtney Waters





# District Partners

Services are provided to 54 public school systems:

- 22 In-County
- 28 Out-of-County
- 4 Charter Systems

#SEETHEIMPACT

# Why Do Districts Partner With Us?



Certified Teachers



Proven Results



Tremendous Value



Academic Success



#SEETHEIMPACT

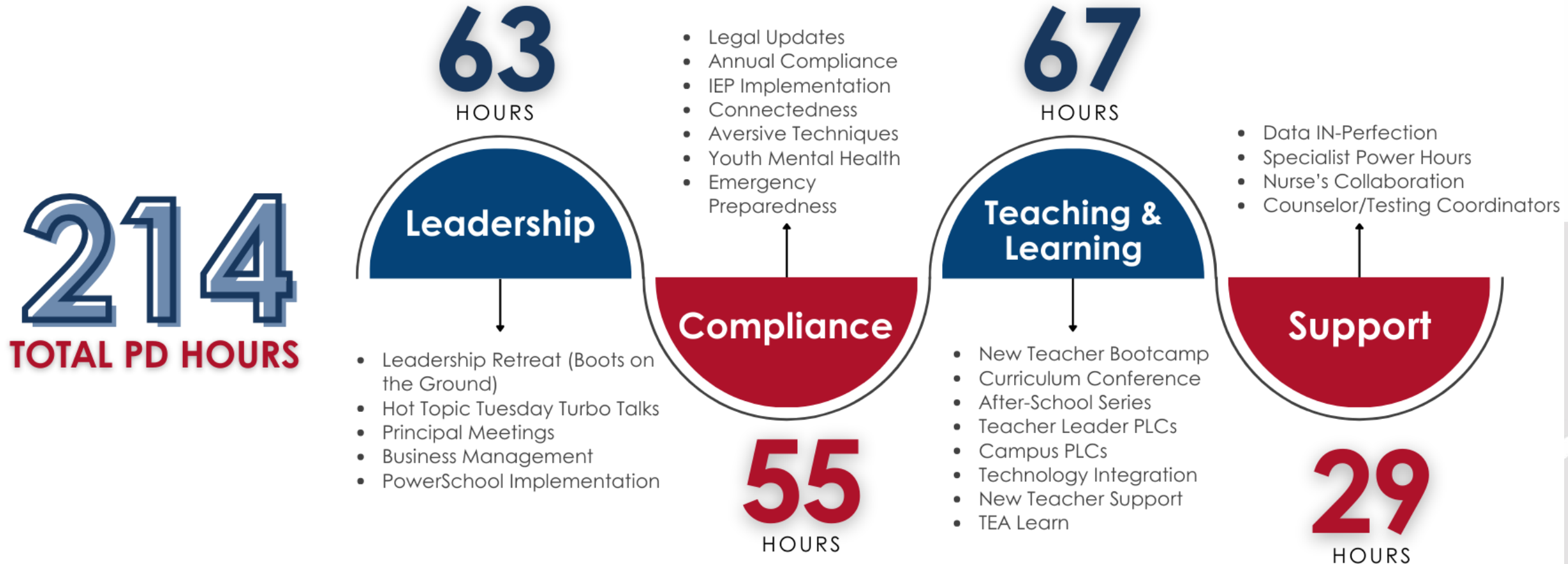


# Professional Growth & Development

- Ongoing professional learning will take place at various times during the school year in order to:
  - Follow-through on previous trainings
  - Expose staff to specific learning based on classroom trends
  - Provide support to novice and experienced campus staff
  - Continuous improvement of classroom instruction and behavioral outcomes



# Professional Growth & Development





# Professional Growth & Development



**CONNECTEDNESS!**  
@theVarsitylevel.



#SEETHEIMPACT





# THANK YOU!



**Center for  
Educator  
Success**



Communications and  
Creative Services



Business Services



Human Resources



Construction Services

**CP CHOICE<sup>SM</sup>**  
**PARTNERS**  
*The Right Resources. Right Now.*



The Center for  
**Safe and Secure Schools**  
Harris County Department of Education



Maintenance &  
Operations



Grants  
Development



Information  
Technology Services



Research &  
Evaluation  
Institute

**#SEETHEIMPACT**



**Harris County  
Department of  
Education**